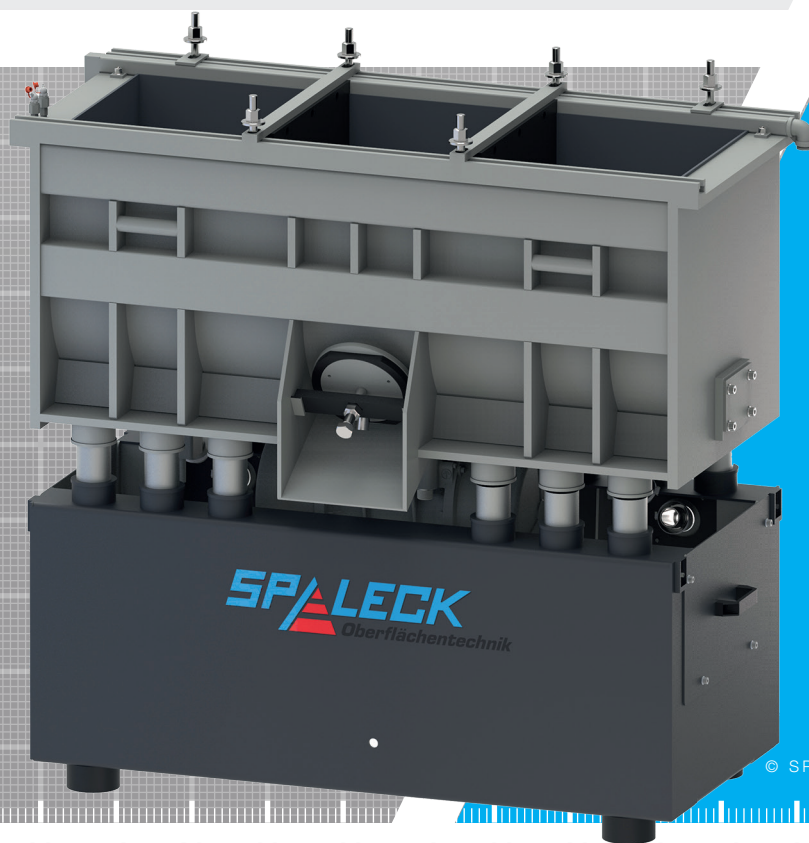


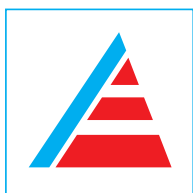
TUB VIBRATORS  
**STV**



© SPALECK ENGINEERING

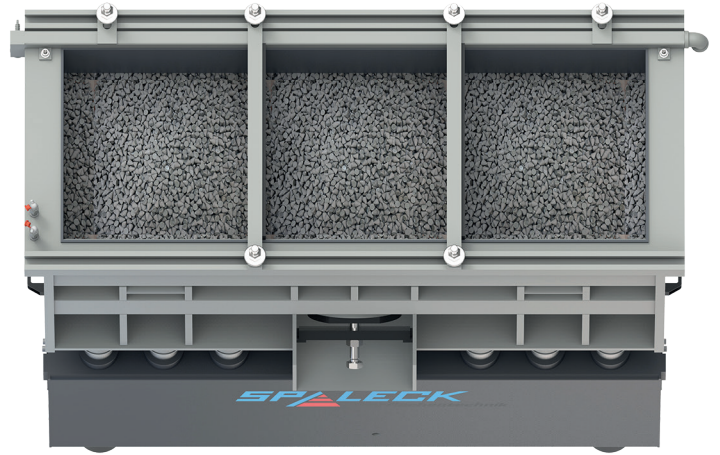
**Deburring · Edge Rounding · Cleaning  
Shining · Polishing**

Treatment of bulky or long parts, that cannot be treated in round tub vibrators due to their size. Thanks to its flexible chamber system suitable for the processing of touch-sensitive parts.



MADE IN GERMANY

[www.spaleck.biz](http://www.spaleck.biz)



# TUB VIBRATORS STV

### Technical features:

- Energy-saving and low-wear drive
- Tub lining made of wear-resistant polyurethane
- Floor drain with siphon
- Media removal plug to empty the working tub

### Optional features:

- Tub lining made of wear-resistant special rubber
- Manually pivotable sound protection lid
- Frequency converter for a continuous adjustment of the motor speed
- Adjustable separation walls to divide the working tub into variable processing chambers

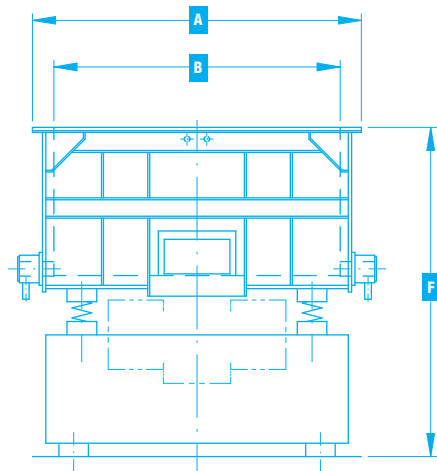
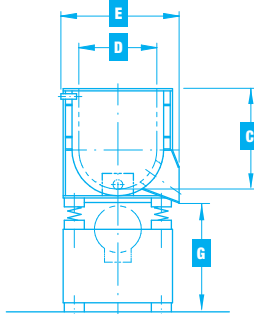
### Technical data:

Description		STV40	STV100	STV200	STV500	STV1000
Working tub volume	l	40	100	200	500	1000
Operating voltage	V   Hz	400   50	400   50	400   50	400   50	400   50
Drive power	kW	0,9	1,6	1,6	10,0	16,0
Motor speed	Rpm	1400	1400	1400	1400	1400
Empty weight basic machine	kg	270	360	670	1800	2600
Operating weight max.	kg	400	600	1150	3000	4950
Space requirement	m <sup>2</sup>	0,35	0,53	0,85	6,0	7,5

Further machine versions on request.

### Dimensions in mm:

Description		STV40	STV100	STV200	STV500	STV1000
Length vibrator	A	730	1000	1250	3500	4100
Length working tub	B	600	870	1000	1480	1980
Height working tub	C	230	440	540	700	800
Width working tub	D	300	350	420	640	790
Width vibrator	E	480	530	650	1150	1300
Top edge vibrator	F	950	1000	1200	1260	1420
Bottom edge media removal plug	G	485	490	490	585	200



© SPALECK ENGINEERING